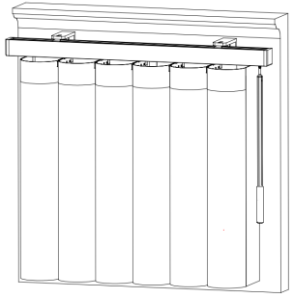


N301244 SmartDrape™

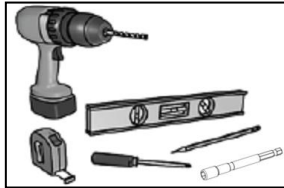
Installation Instructions



SmartDrape™

Required Tools

- Drill
- Measuring Tape
- Screwdriver
- Level
- Pencil
- Hexagon Socket

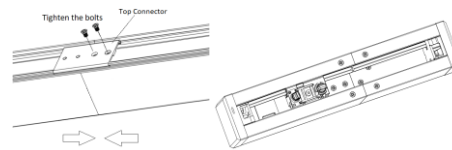
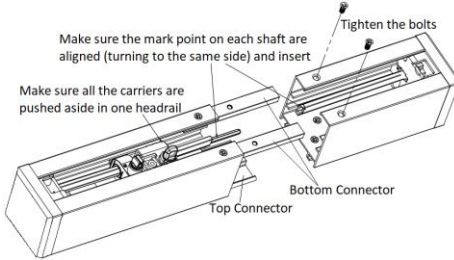


Components

Name	Drawing	OM	Ceiling Pocket Mount
L Bracket		V	
Spacer (shim)	Optional for outside mount only 	V	
C Clip		V	
Nut		V	
Bolt		V	
Hex Head Screw	For installing Lbracket 	V	
Flat Head Screw	For installing spacers in ceiling pocket 		V
Mushroom head Screw			V

Joint Headrails (SmartJoint)

- **Joint Headrails/Shfts (for headrail width >2400mm:** Make sure the mark point on each shaft are aligned (turning to the same side) and insert. Joint the two headrails together and tighten the bolts.

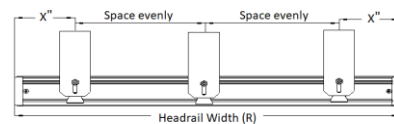


Installation

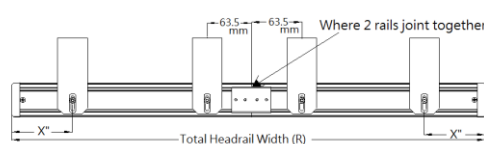
- **Outside Mount-** See below chart for L bracket placement

Headrail width (R)	L bracket placement	Note
$R \leq 1016\text{mm}$	$X=101.6\text{mm}$	Without SmartJoint
$1016\text{mm} < R \leq 2400\text{mm}$	$X=203.2\text{mm}$	Without SmartJoint
$R > 2400\text{mm}$	63.5mm from where the 2 rails joint together ; $X=203.2\text{mm}$	With SmartJoint

Without SmartJoint



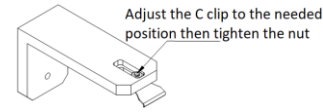
With SmartJoint



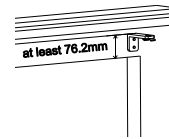
- **Ceiling Pocket Mount: Headrail Predrilled**

Outside Mount

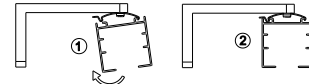
- Tighten the nut and bolt after the C clip has been adjusted to the needed position on the L bracket.



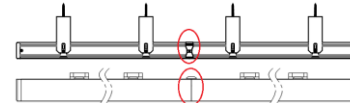
- Make sure that the distance from the top of the bracket to the edge of the window frame is at least 76.2mm (see below).



- Place brackets into position and mark where the screws will go. Secure the brackets into position using the hex head screws provided. If more brackets have been supplied, space them evenly between the first two brackets. We recommend using a level to align brackets.
- Position the top front lip of the headrail into the C clip front lip, then push the headrail up at the back to click it into place as per step 2 in diagram below.

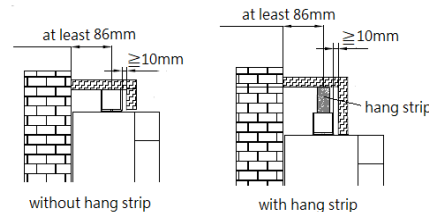


For side by side shades, add a C clip where the two headrails meet.

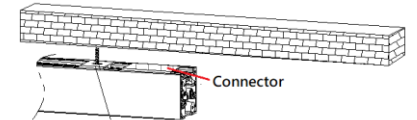


Ceiling Pocket Mount

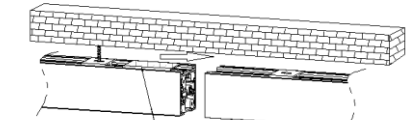
- For Ceiling pocket mount, the distance from the pre-drilled hole of the headrail to the wall should be at least 86mm.
- Top mount directly.



- For side by side shade, there's a connector which is inserted on the headrail. Just move it to where the two headrails meet when installing.



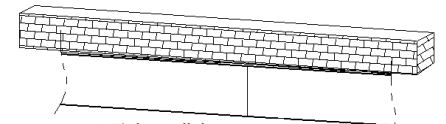
1. Left headrail first. Tighten the screws but not too tight- leave some space for slight adjustment.



2. Align the right headrail with the left and then slide the connector to where the two headrails meet.



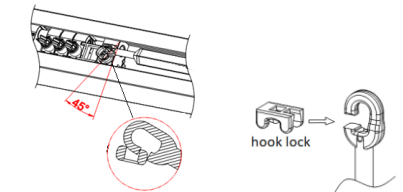
3. When the connector is at the correct position, tighten the screws for the right headrail.



4. Tighten all the screws.

Tilt wand (for double tilt wand)

- For double tilt wand design, one tilt wand is preassembled but the other is not.
- To assemble the tilt wand, make the wand parallel to the headrail then install the wand on the tilter at 45 degree angle. Then insert the hook lock to prevent the wand from falling out.



N301244

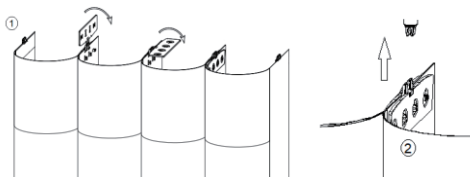
Fabric

● Install the fabric vanes

Unroll the fabric. Take the fabric vanes one by one from the top of the unrolled fabric. If there are two rolls, start with roll A.



- The first vane on the top (from the top of the unrolled fabric) goes to the left end.
- Fasten the fabric vanes to one another by clasping the clips together, as per step 1 in the diagram below. Then push the clips up to the carriers, as per step 2 in the diagram.

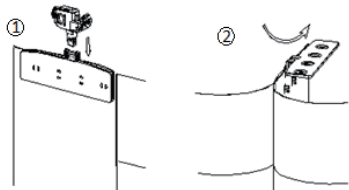


- Assemble the fabric vanes from the left to right. Repeat the above steps and then done.

Removal

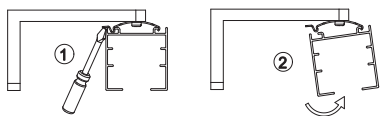
● Remove the fabric vanes

Pull down the fabric clips from the carriers; then detach the clips holding the fabric together.



● Remove the headrail-Outside Mount

Insert flat screwdriver between the c clip and the headrail at the back. Tilt screwdriver forward until headrail loosens. Remove headrail from clip.

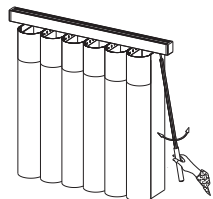


● Remove the headrail-Inside Mount Pocket Mount

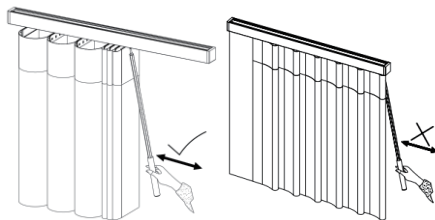
Loosen the screws and then remove the headrail.

SmartDrape™ Shade Operation Instructions

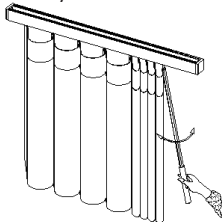
- To operate, just rotate the wand to let in the light or to keep privacy.



- Make sure the fabric vanes are in open position when stacking the shade open or closed.



- Please note that the fabrics cannot close entirely when some vanes are stacked.



- If the fabric vanes don't move simultaneously when rotating the wand, please keep rotating the wand to one end until you hear the "click-click" sound and then rotate the opposite direction to another end until you hear the click sound again. See if it's back to normal. If not, please repeat above steps few times.



Maintenance

● Hand wash

1. Remove fabric vanes from the carrier (Do not disattach the fabric clips from the fabric vane)
2. Fold the fabric vane carefully (do not fold it hard) and put it in a container filled with water and laundry detergent.
3. Soak the fabric vane in water with laundry detergent for about 30 minutes and then rub the stain gently.
4. Soak the fabric in clean water for about 5 minutes and then clean out all the bubbles.
5. Shake the fabric vane for few times and then stand still until no dropping water. (Please be careful not to crease or wrinkle the fabric during this time).
6. Hang the fabric vanes back and keep them in open position (keep them in U shape). Leave them open to dry naturally.
7. If it's wrinkled after the fabrics are dry, steaming it to eliminate the wrinkles. It's recommended that you save the paper tube that came with the fabric roll and place it behind the fabric vane for support while steaming. Fabric vane can be steamed set at "Nylon" (around 94-104°C).

● Machine wash

1. Remove fabric vanes from the carrier (Do not disattach the fabric clips from the fabric vane)
2. Roll each fabric vane from bottom to the top and then put one roll of fabric in each laundry bag.
3. Set to soft/ gentle mode for wash machine. Use cold water with laundry detergent. Do not spin.
4. Take out the fabric roll from the laundry bag. Shake the fabric vane for few times and then stand still until no dropping water. (Please be careful not to crease or wrinkle the fabric during this time).
5. Hang the fabric vanes back and keep them in open position (keep them in U shape). Leave them open to dry naturally.
6. If it's wrinkled after the fabrics are dry, steaming it to eliminate the wrinkles. It's recommended that you save the paper tube that came with the fabric roll and place it behind the fabric vane for support while steaming. Fabric vane can be steamed set at "Nylon" (around 94-104°C).



Scan for Installation Guide

NORMAN®
SHUTTERS. BLINDS. SHADES.